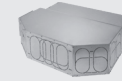


# WAVE

- ▶ R410A On-off
- ▶ Mid static pressure
- ▶ Extra thin indoor unit (30cm)
- ▶ Compact design for narrow spaces
- ▶ Built-in air distribution box (4-6 outlets)
- ▶ Rear/Bottom air inlet
- ▶ Quiet operation
- ▶ Fresh air connection

- Zone Control System (optional)
- Dual Control Operation
- I Feel
- Timerx4
- Indoor Hydrophilic Coating
- Sleep

- Motion Detector (optional)
  - Autorestart
  - Auto
  - Wifi (optional)
- BMS**



▶ WAVE



▶ CONTROL PANEL

		Units	WAVE 35	WAVE 35/3	WAVE 40	WAVE 40/3	WAVE 50/3	WAVE 60/3
Capacity	Cooling	kW	7.31	7.31	9.59	9.69	12.44	13.30
	Heating	kW	7.31	7.31	9.59	9.97	13.49	13.11
Power Consumption	Cooling	W	2,350	2,350	3,060	3,100	3,680	4,080
	Heating	W	2,120	2,120	2,720	2,770	3,840	4,190
Efficiency	Cooling/Energy Label	EER	3.13/B	3.13/B	3.13/B	3.13/B	3.40/A	3.26/A
	Heating/Energy Label	COP	3.46/B	3.23/C	3.51/B	3.61/A	3.51/B	3.13/D
Dehumidification	LIT/H		2.8	2.8	3.4	3.4	3.7	3.8
Power Supply	Volt/Hz/Ph		230/50/1	400/50/3	230/50/1	400/50/3	400/50/3	400/50/3
Fuse Rating	A		16C	3x10C	20C	3x16C	3x16C	3x16C
Cooling Range	C		15°~48°	15°~48°	15°~48°	15°~48°	15°~48°	15°~48°
Heating Range	C		-15°~24°	-15°~24°	-15°~24°	-15°~24°	-15°~24°	-15°~24°
Compressor Type	-		Scroll	Scroll	Scroll	Scroll	Scroll	Scroll
Piping Connections	inch		3/8"-5/8"	3/8"-5/8"	3/8"-5/8"	3/8"-5/8"	3/8"-3/4"	3/8"-3/4"
<b>INDOOR UNIT</b>								
Dimensions (WidthxHeightxDepth)	mm		1,100x300x810	1,100x300x810	1,100x300x810	1,100x300x810	1,100x300x810	1,100x300x810
Air Flow (High)	m <sup>3</sup> /h		1,530/1,190/1,020	1,530/1,190/1,020	1,615/1,700/2,040	1,615/1,700/2,040	1,615/1,700/2,040	1,700/2,040/2,380
Sound Pressure Level at 1m at High Speed (power)	db(A)-pr		48(56)	48(56)	50(58)	50(58)	48(56)	48(56)
Sound Pressure Level at 1m at Medium Speed (power)	db(A)-pr		45(53)	45(53)	47(55)	47(55)	45(53)	45(53)
Sound Pressure Level at 1m at Low Speed (power)	db(A)-pr		42(50)	42(50)	44(52)	44(52)	42(50)	42(50)
Static Pressure (Max)	Pa		75	75	100	100	100	100
Weight	Kg		48	48	50	50	50	50
<b>OUTDOOR UNIT</b>								
Dimensions (WidthxHeightxDepth)	mm		900x640x440	900x640x440	900x640x440	900x640x440	900x1,280x380	900x1,280x380
Airflow	m <sup>3</sup> /h		3,910/2,550	3,910/2,550	3,910/2,550	7,820/5,100	7,820/5,100	7,820/5,100
Sound Pressure Level at 1m at High Speed (power)	db(A)		64(72)	64(72)	64(72)	64(72)	64(72)	64(72)
Weight	Kg		70	70	70	70		